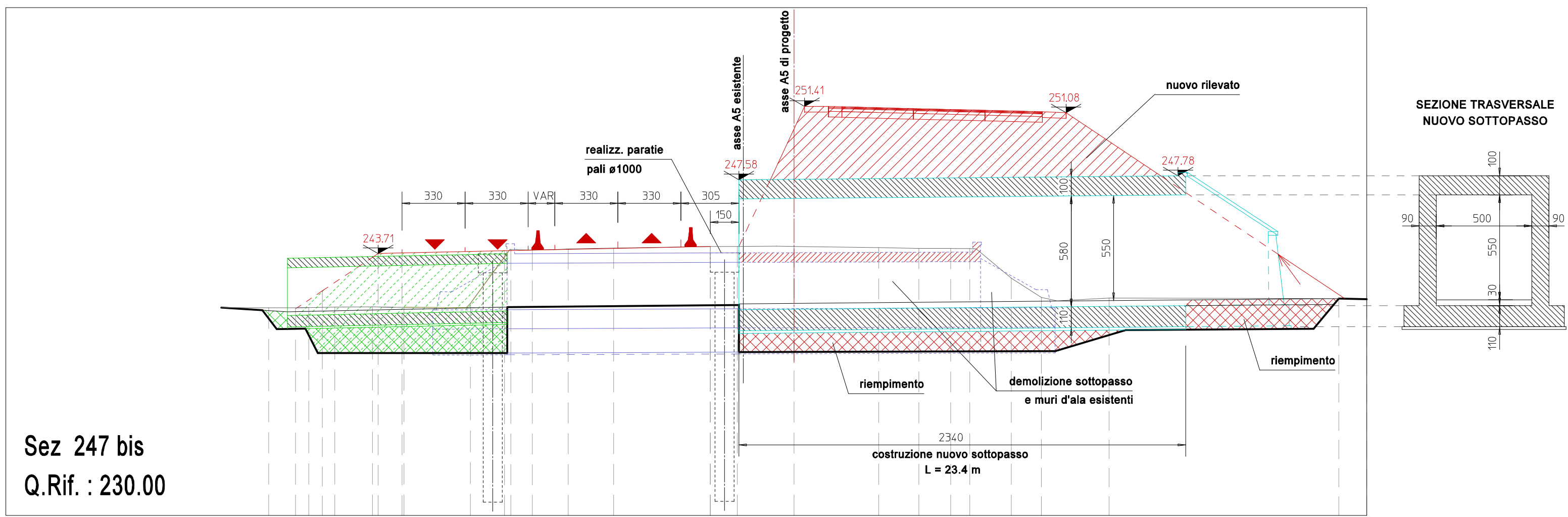
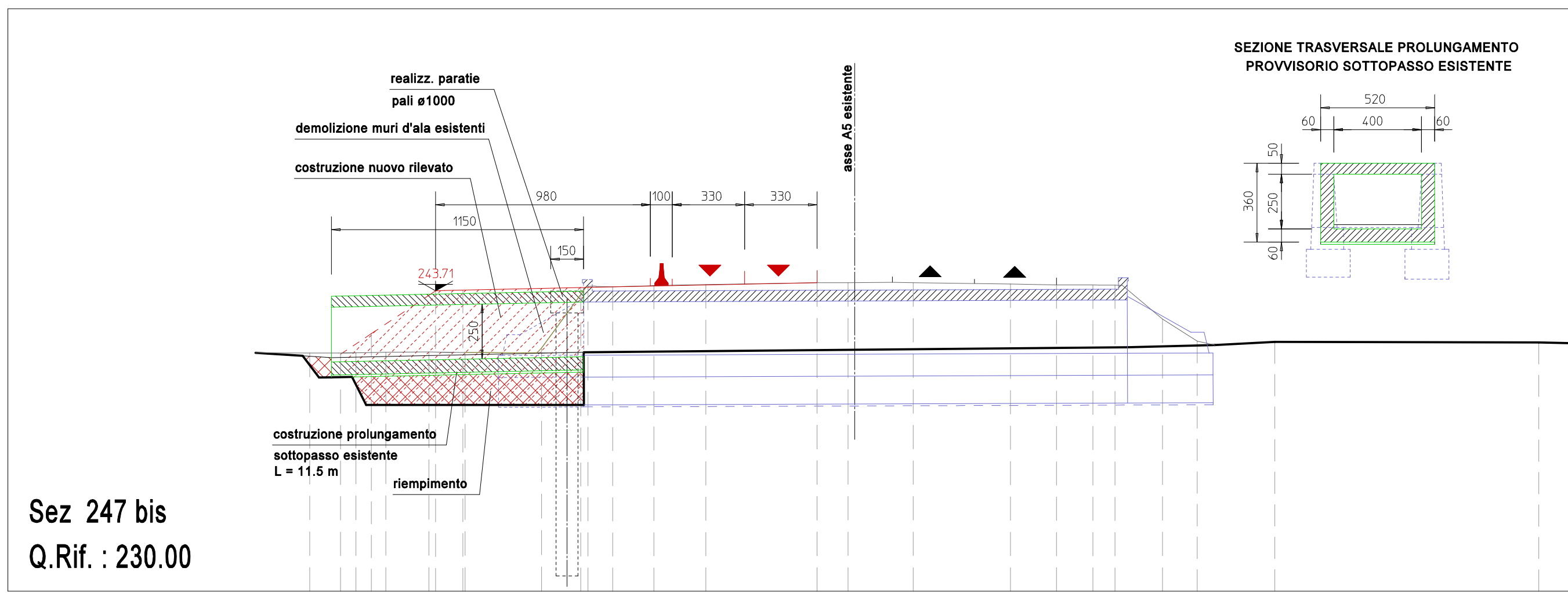
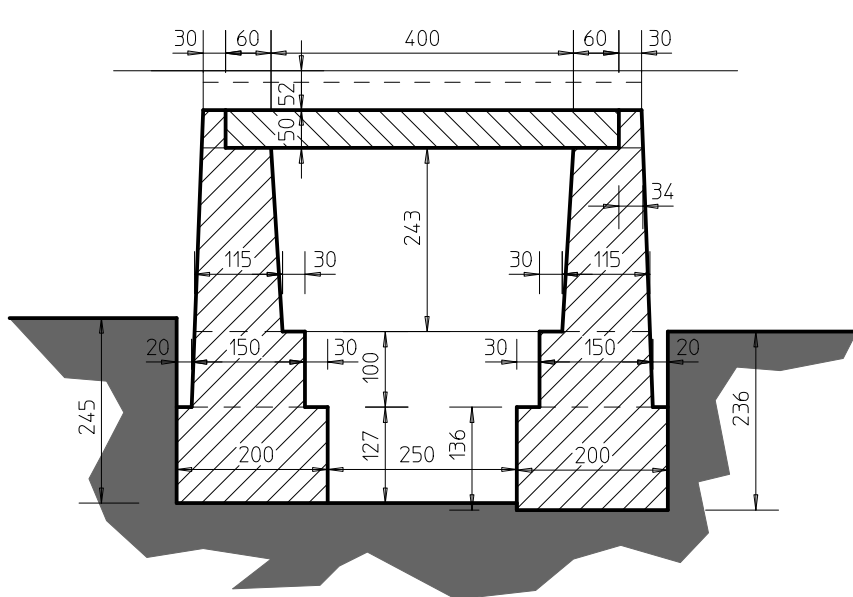
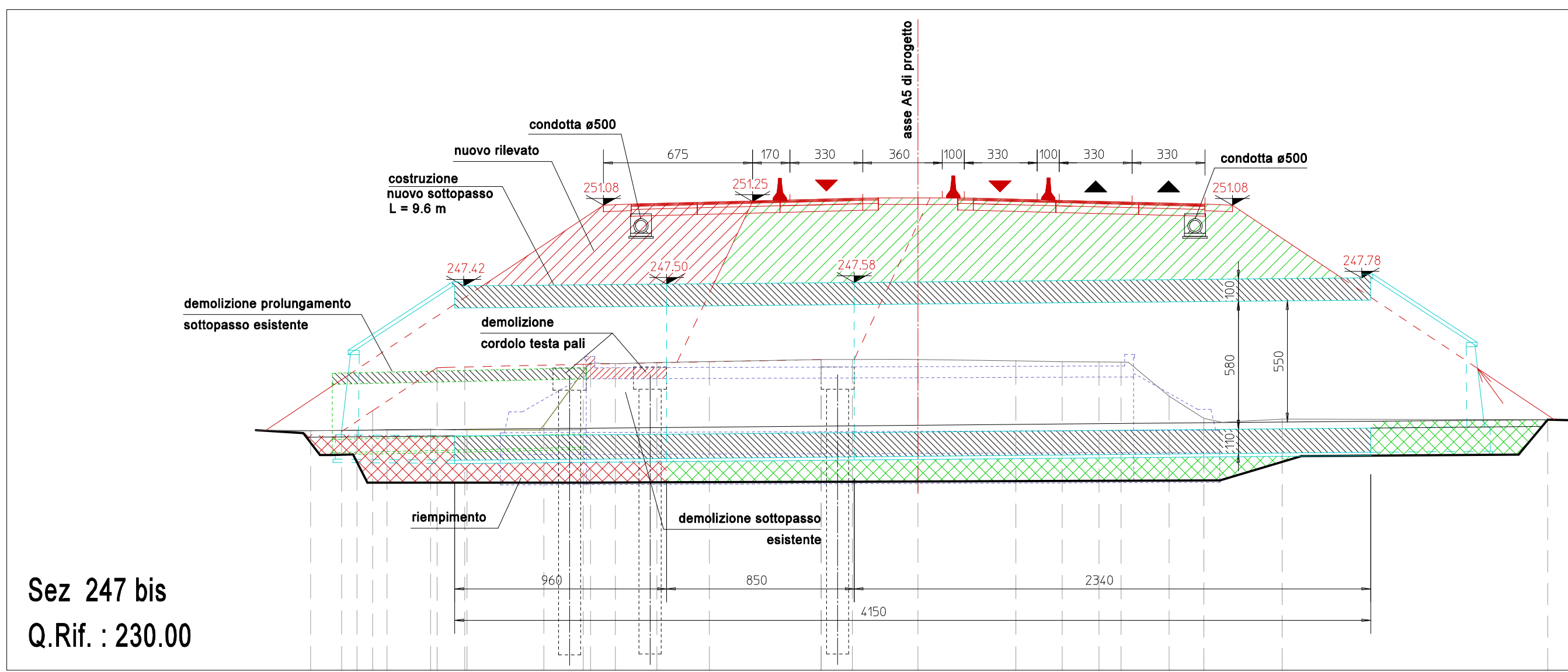
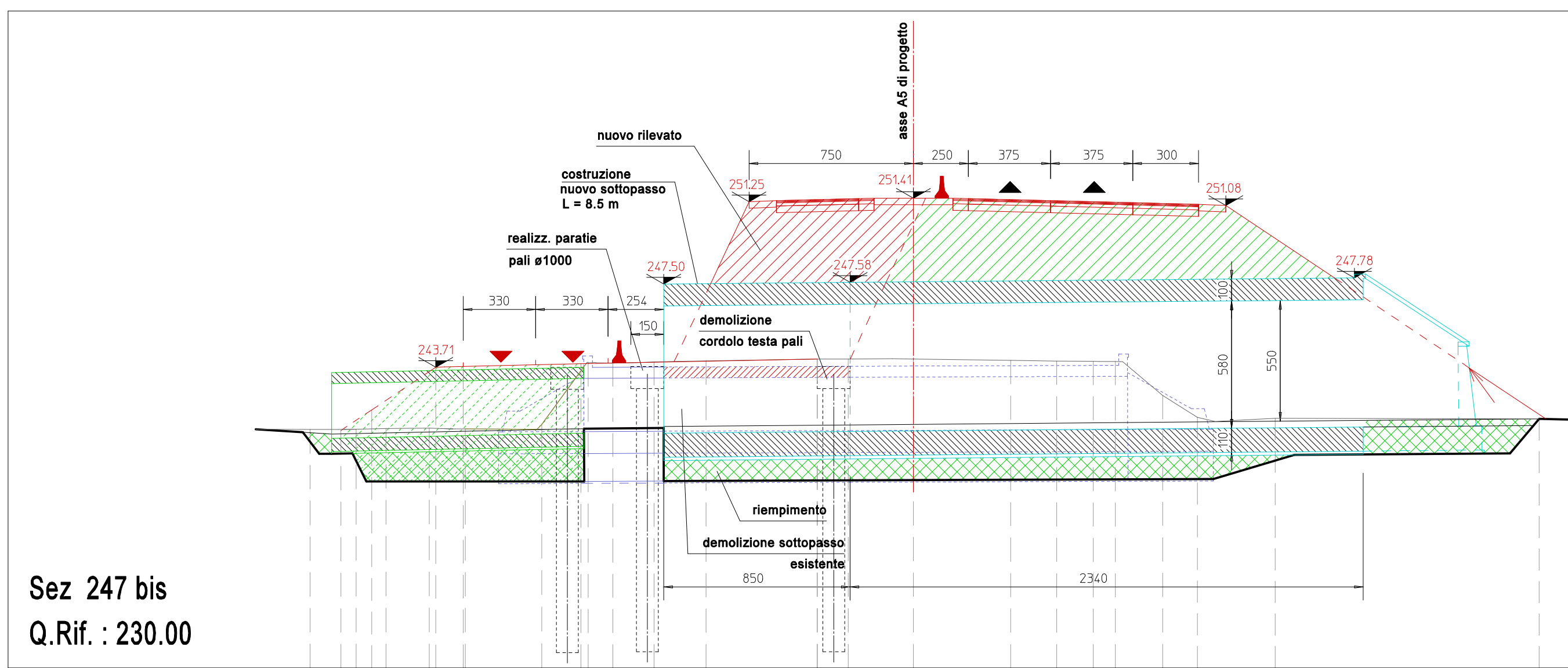
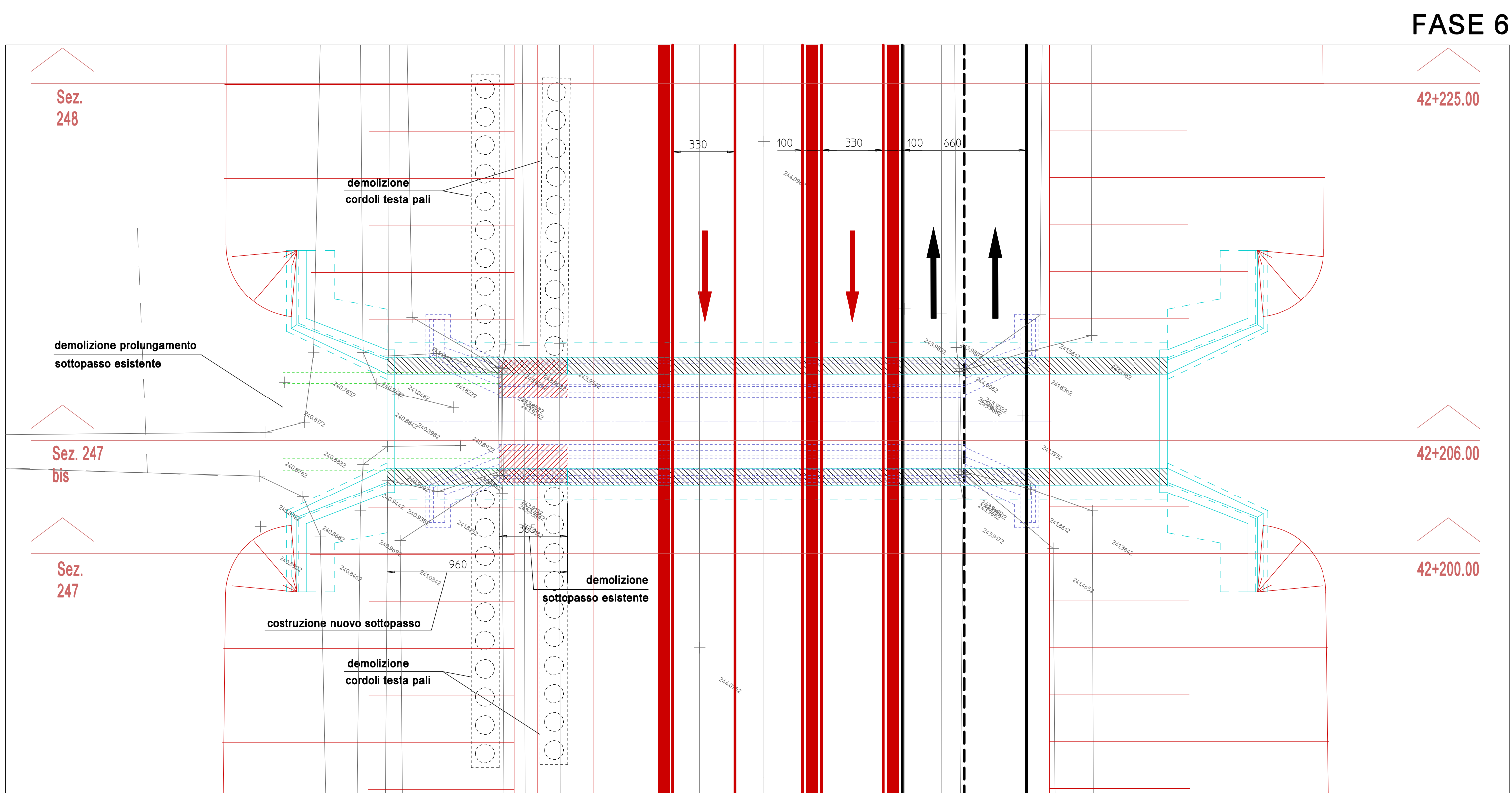
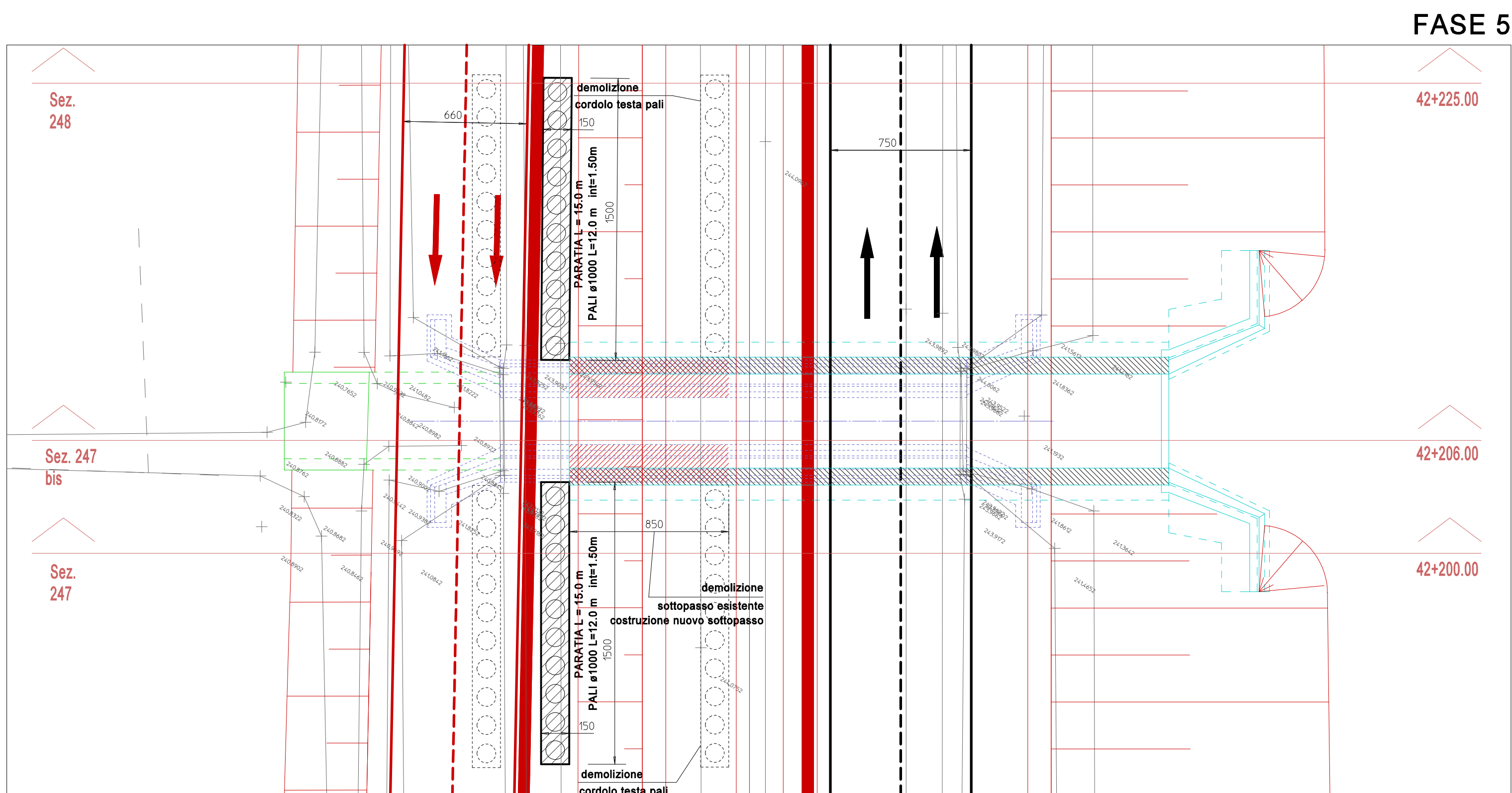
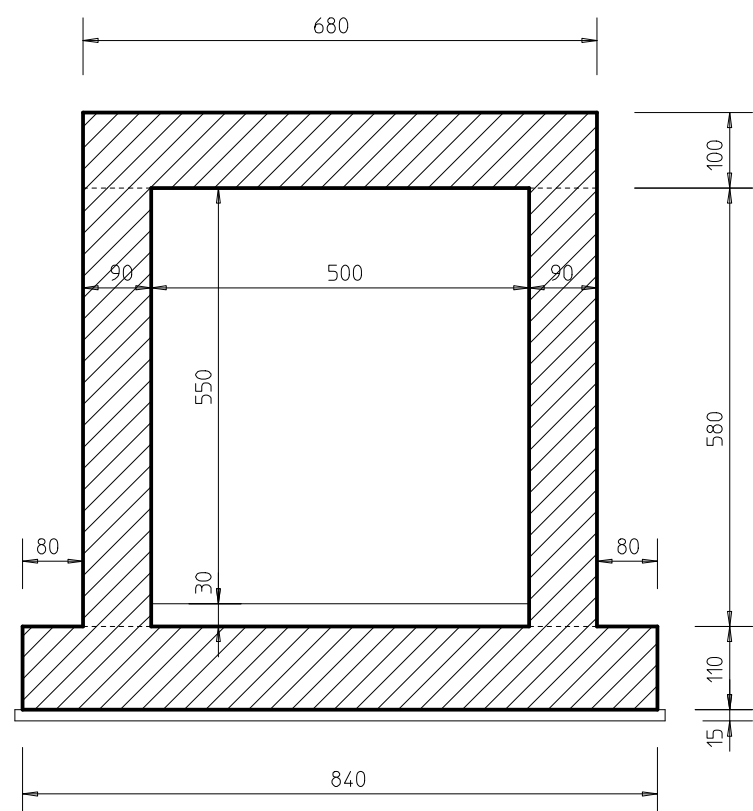


SEZIONE TIPO SOTTOPASSO ESISTENTE
SCALA 1 : 100



SEZIONE TIPO NUOVO SOTTOPASSO
SCALA 1 : 100



TORINO - IVREA - QUINCINETTO
IVREA - SANTHIA'
SISTEMA AUTOSTRADALE
TANGENZIALE DI TORINO

**AUTOSTRADA A4/A5 - A5 TORINO QUINCINETTO
IVREA SANTHIA'**

**NODO IDRAULICO DI IVREA
2° FASE DI COMPLETAMENTO**

PROGETTO DEFINITIVO

**PARTE STRUTTURALE - SOVRAPPASSI E SOTTOPASSI
SOTTOPASSO AL km 42+206
DISEGNO D'INSIEME**

IL PROGETTISTA	REDATTO	CONTROLLATO	APPROVATO
ATA ENGINEERING	IGEAS P. Einaudi	IGEAS M. Barale	ATA ENGINEERING V. Palmisano
DATA	GIUGNO 2012	REVISIONE	DATA
SCALA	1 : 200		

UFFICIO	COMMESSA	N° PROG.	FASE	ARREDAMENTO	N° ELABORATO	REV.
SSP0101A05000PDSTR	41900	0	-	-	-	-